

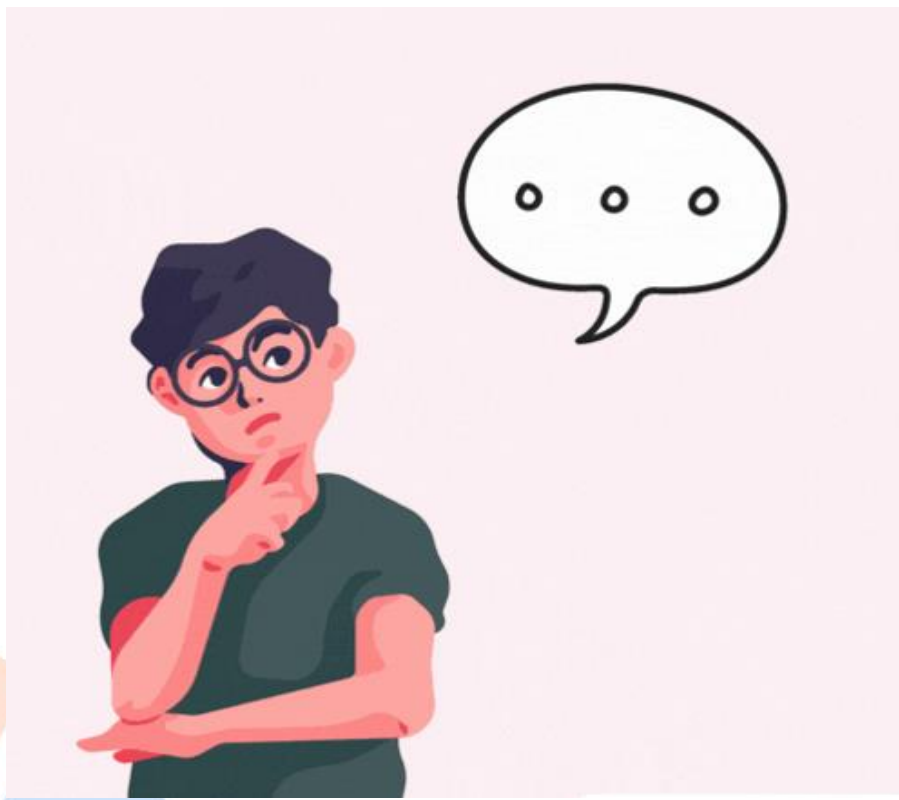
Electrically Assisted Pedal Cycles (EAPC), Electric Motorcycles and Scooters

Merseyside is currently seeing an upward trend in the use of electrically assisted pedal cycles (EAPCs) and electric motorcycle's.

Merseyside Police are committed to tackling the increased threat and risk posed by EAPCs and electric motorcycles but in doing so, education is needed for those using them.

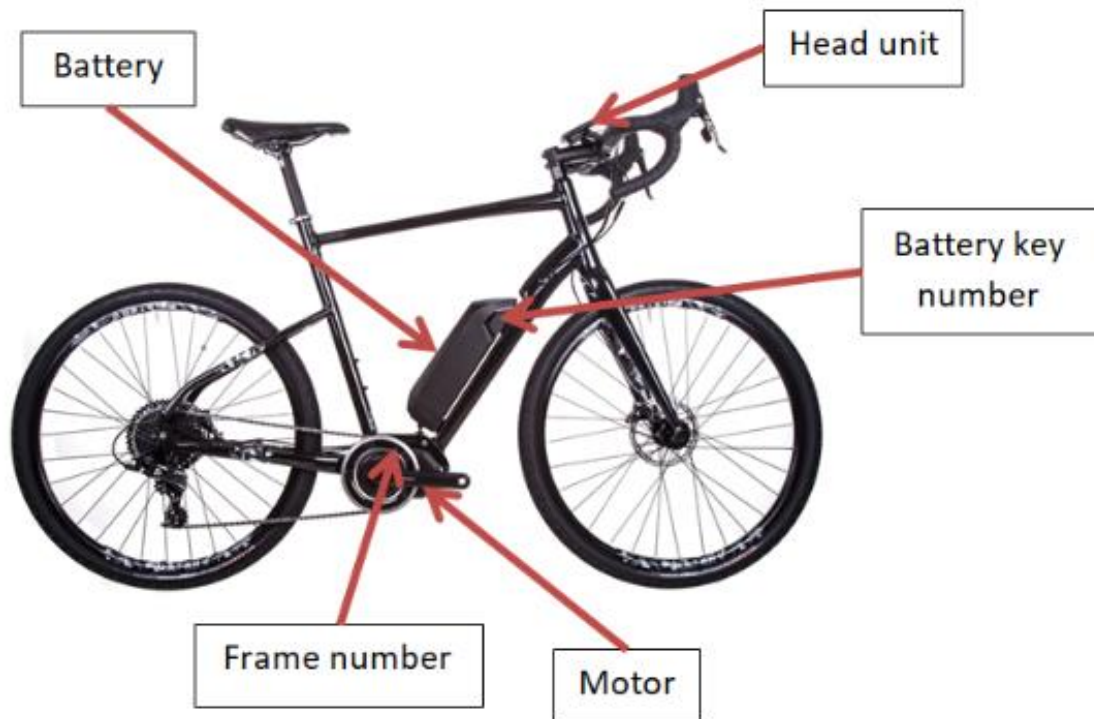
A large portion of riders are young people, sometimes illegal, dependent on their age and therefore without a substantial driver's licence.

Did you know





You can **ONLY** ride an electric bike if you're **aged 14 or over**, as long as it meets certain requirements.



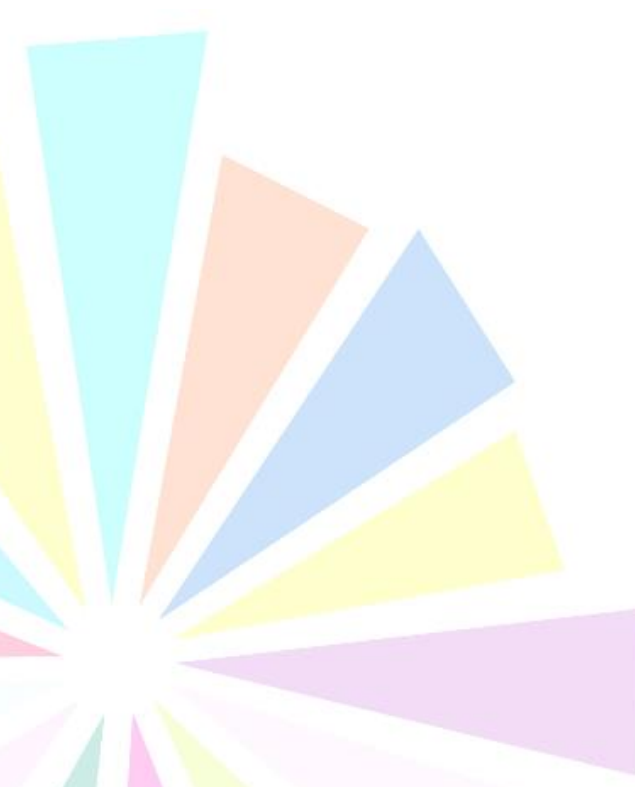
Any modifications to a legal EAPC render the whole bicycle outside of the criteria and will be treated as a motorcycle or moped.

For example:

- if a person removes the pedals
- If a person makes modifications to the motor to increase power output
- If a person removes manufacturer labels showing the power output / manufacturer, battery voltage / maximum speed.



Any electric bike that does not meet the EAPC rules is **classed as a motorcycle or moped** and needs to be registered and taxed.





You'll need a driving licence to ride one and you must wear a crash helmet.

The bike must also be type-approved if either:

- it can be propelled without pedalling (a 'twist and go' EAPC)
- it does not meet the EAPC rules

Merseyside Police are concerned that young people are leaving themselves vulnerable to being targeted for the EAPC and electric motorcycles which are seen as a high-value item.

There have been many reports of various crimes involving EAPC's and electric motorcycles and the level of violence is increasing, we do not want any young people on Merseyside to become a victim of any crime.

What Merseyside Police are doing

[Two illegal e-bikes seized and male arrested following incidents in Huyton and Bootle | Merseyside Police](#)



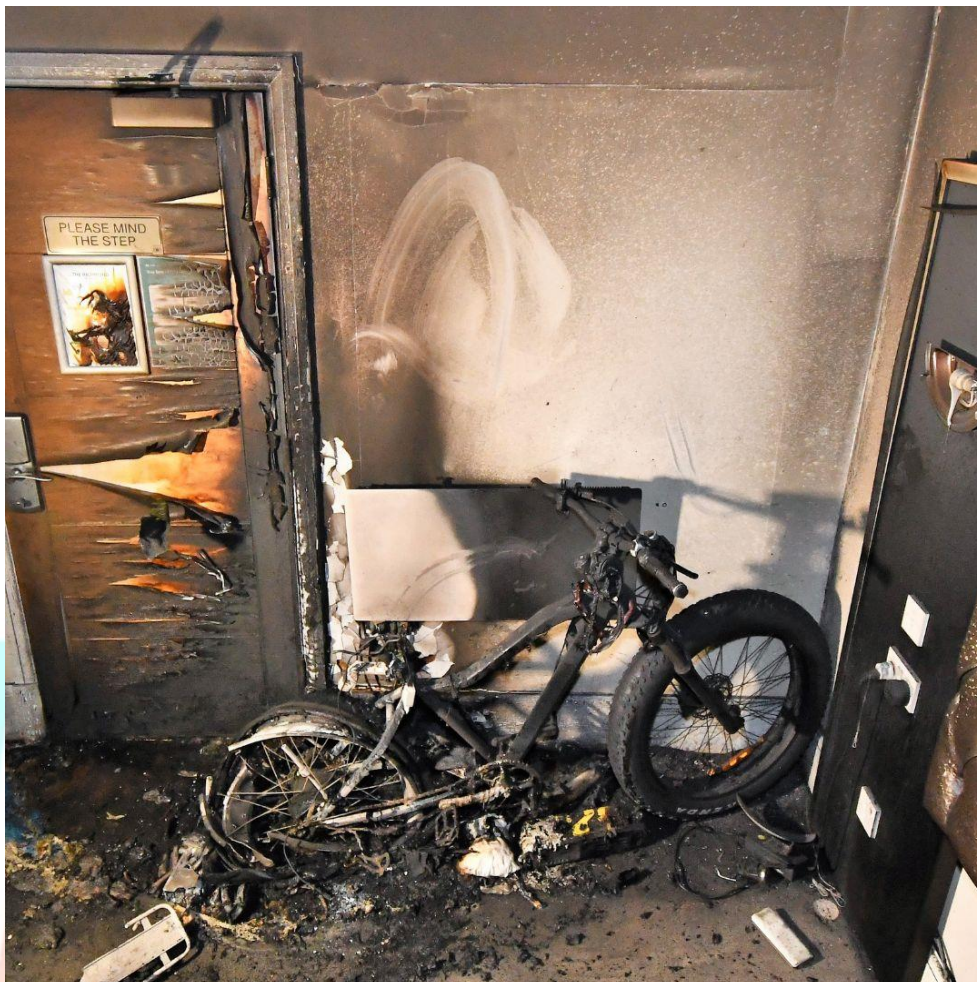


Below shows the dangers of incorrect storage and / or inadequate lithium iron batteries fitted to regular pedal cycles.

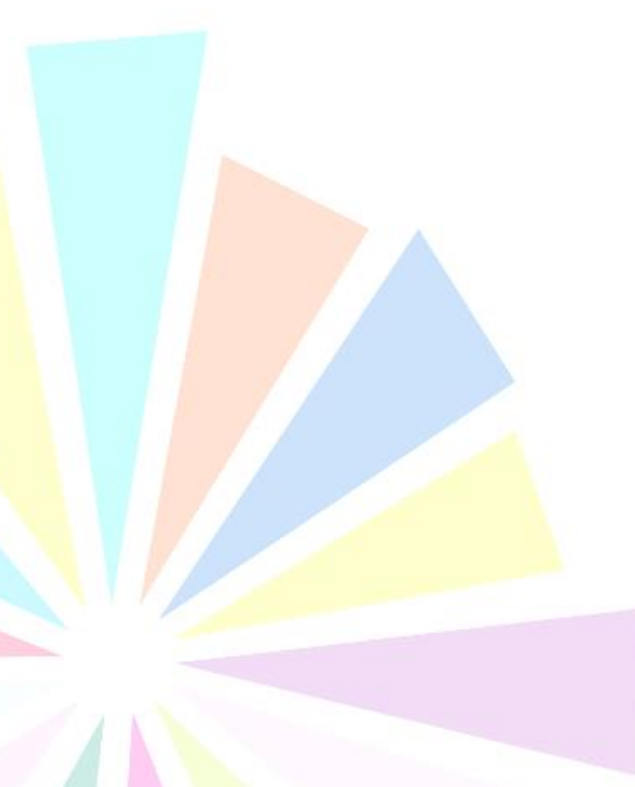
'Images and videos from the London Fire Brigade'

[LFB e-bike fire.mp4](#)

[E-bike rescue Whitechapel LONDON LFB and Danny McLoughlin must be credited.MOV](#)



prevention
is at our core, putting our community first





What can you do

[Police help cyclists gear up for summer with free security marking events |](#)

[Merseyside Police](#)



- Register your bike (Bike Register events)
- Protect your bike (below – MARKIT)
- Understand the legal requirements
- Correct storage – fire safety
- Safe usage – road and personal safety

Keep your child safe

- Stick to well-lit routes
- Make sure mobile phones are charged
- Ensure you know what time your child is due home i.e. after school clubs, detention, social meet with friends
- If, your child is witness or victim, how to report any incident
- Open and honest conversations – road safety, personal safety
- Do not purchase an EAPC for a child under 14 years of age
- Utilise reporting mechanisms to inform the police of storage sites, ASB usage i.e. crime stoppers



Please attached a letter for parent s/ guardians and carers to infrma nd educate.

If this could be added to your online platform, that would be greatly appreciated.



EAPC - electric bike
- school Letter.docx

Kind Regards

Sgt Carly Slinger

Prevention Hub

Merseyside Police





prevention
is at our core, putting our community first



Scan to register your bike



Top Tips to Protect your Bike

M **Mark your Bike**
 Attend a free bike marking event advertised by Merseyside Police. These are advertised on the Merseyside Police Website and Social Media channels. Your bike is 83% less likely to be stolen if it is both marked and registered.

A **Awareness**
 When you are out riding your bike be aware of your surroundings and don't let thieves try to steal it. When out on the street leave your bike in a well-lit area, where it can be seen by passers-by.
 - Lock both wheels and the frame to a cycle stand, or other immovable object.
 - Make sure the lock goes through the frame, the wheel and the post you are securing it to.
 - Take any removeable items with you.

R **Register your Bike**
 Register your bike for free by visiting The National Cycle Database/ BikeRegister. Merseyside Police are now actively checking bikes on the National Cycle Database. If your bike is stolen, this will significantly increase the chances of you getting your bike back. (Scan QR Code above)

K **Keep out of View**
 When at home store your bike in a locked shed, or garage.
 - Keep it out of view
 - Don't leave it unattended outside the front of your house.
 - Secure it to an immovable object.

I **Insure**
 If you have invested a significant amount of money into your bike, it is worth considering specialist bike insurance or checking that your home insurance covers you for theft away from the home.

T **Top Bike Lock**
 A decent bike lock is worth its weight in gold. A heavy-duty bike lock can make the thieves job more difficult, often meaning they will steal a bike that is less secure. Make sure you buy a Sold Secure Diamond or Gold lock



@merseysidepolice
@MerseyPolice



prevention
is at our core, putting our community first